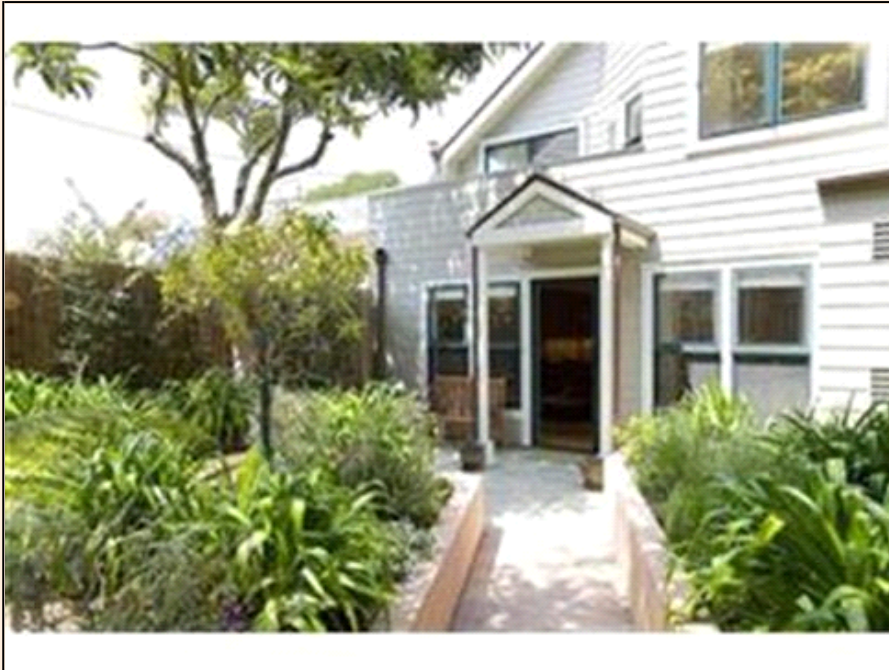


3410 California St San Francisco

Home like condo Cottage in Laurel Village

PROPERTY DETAILS



Listing Price: **\$1,290,000**

Listing Address: 3410 California St
San Francisco
CA 94118

Bedrooms: 2

Full Baths: 2

Partial Baths: 0

SQ FT: 1200

Garage: 1 Car

QR Code:

On a SmartPhone?
Scan the QR code
to see this listing



PROPERTY DESCRIPTION

Convenience, location and unparalleled privacy! Nestled in the back of a newly remodeled 3 unit condo building, stands a beautifully remodeled, bi-level single family house-like condominium, on its own little piece of San Francisco. The 2bd,2ba home has an open floor plan, high-end appliances, h/w floors, fireplace, washer & dryer, deeded balcony, patio and large private garden, plus one car parking. Conveniently located across from Laurel Village, close to Sacramento St shops & restaurants.

CONTACT INFORMATION



SF is HOME Real Estate Group
Pacific Union Real Estate
robregan.com
One Letterman Drive
San Francisco CA 94129
415-366-8218
415-901-2617
info@SFisHOME.com

The SFisHOME Real Estate Group

San Francisco Real Estate

info@SFisHOME.com
415-366-8218



Ciara Piron

Rob Regan



Equal Housing Opportunity

Property information deemed reliable but not guaranteed and should be verified.

Copyright © 2003-2012 Real Pro Systems LLC. All rights reserved.